

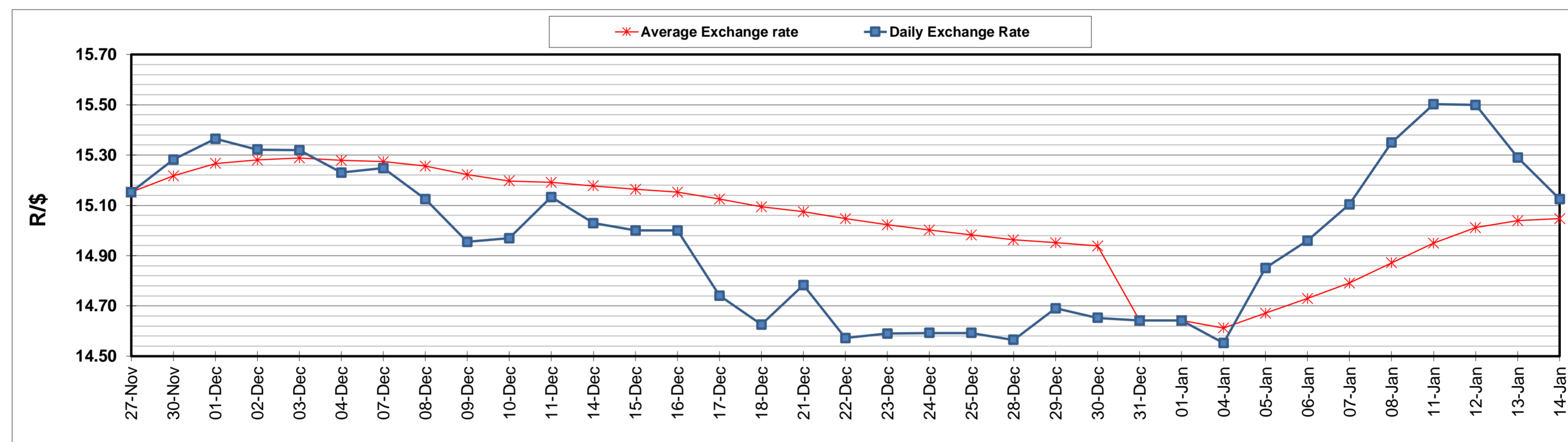
	PETROL 95 ULP	PETROL 93 ULP & LRP	DIESEL 0.05%	DIESEL 0.005%	ILL. PAR.
GAUTENG PUMP PRICE (SA c/l) AS FROM 06/01/2021	1,486.000	1,469.000	-	-	-
WHOLESALE PRICE (SA c/l) AS FROM 06/01/2021	-	-	1,300.420	1,301.820	739.688
SINGLE NATIONAL MAXIMUM RETAIL PRICE	-	-	-	-	930.000
BASIC FUEL PRICE - 14/01/2021 (SA c/l)	608.753	601.314	608.971	610.449	593.886
PRESS RELEASE CONTRIBUTION TO BFP 06/01/2021 - 14/01/2021 (SA c/l)	519.170	512.170	541.630	543.030	527.128
UNIT OVER/(UNDER) RECOVERY - 14/01/2021 (SA c/l)	(89.583)	(89.144)	(67.341)	(67.419)	(66.758)
AVERAGE BASIC FUEL PRICE 31/12/2020 - 14/01/2021	582.747	575.891	581.637	583.669	569.447
AVERAGE UNIT OVER/(UNDER) RECOVERY 31/12/2020 - 14/01/2021	(78.123)	(79.357)	(60.007)	(60.276)	(62.319)

### ANALYSIS MOVEMENT OF AVERAGE OVER/(UNDER) RECOVERY

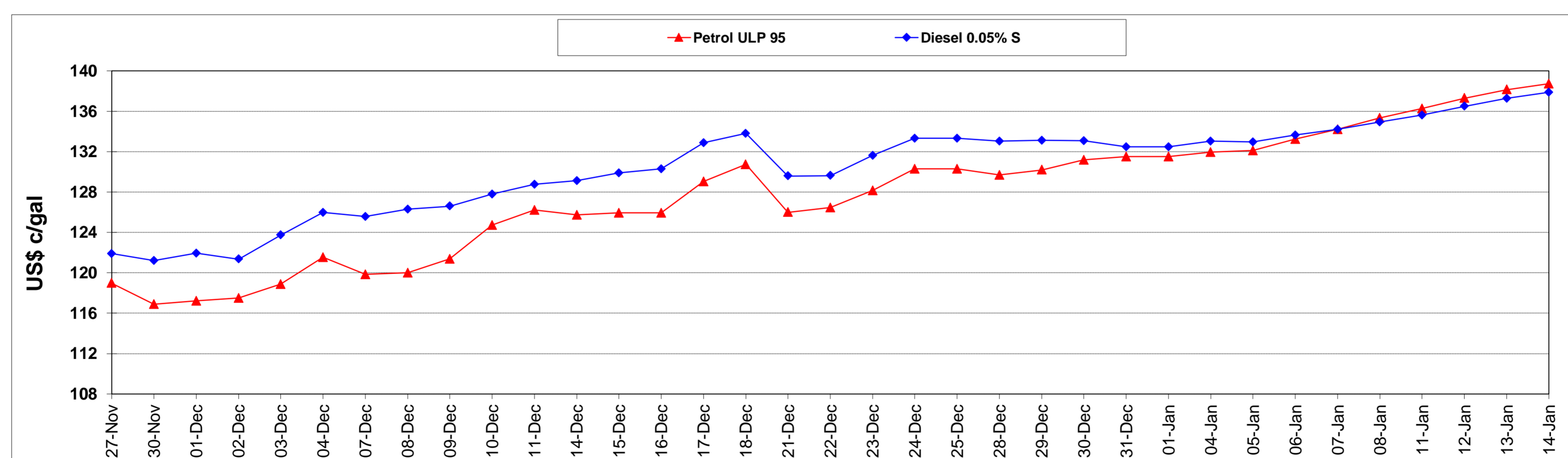
	PETROL 95	PETROL 93	DIESEL 0.05%	DIESEL 0.005%	ILL. PAR.
- MOVEMENT IN INTERNATIONAL PRODUCT PRICES	(73.943)	(75.227)	(55.836)	(56.090)	(58.236)
- MOVEMENT IN EXCHANGE RATE	(4.179)	(4.130)	(4.171)	(4.185)	(4.083)
AVERAGE UNIT OVER/(UNDER) RECOVERY 31/12/2020 - 14/01/2021	(78.123)	(79.357)	(60.007)	(60.276)	(62.319)

### R/\$ EXCHANGE RATE - (R/\$15.1250 - 14/01/2021)

### EXCHANGE RATE USED IN BASIC FUEL PRICE



### INTERNATIONAL PRODUCT PRICES OF BASKET USED IN BASIC FUEL PRICE



### BASIC FUEL PRICE IN SA CENTS PER LITRE

